



SMOBio

Small Bio, Smart Tool

www.smobio.com

Product Information

**YesBlot™ Western Marker I
(10- 200 kDa)**

WM1000

Size: 250 μ l

5 μ l per well for 50 applications

Storage

4°C \geq 3 months

-20°C \geq 24 months

Usage Recommendation

- 1.5~2.5 μ l per well for two-step Western blot using 1st Ab followed with 2nd Ab conjugated with reporter enzymes.
- 2.5~5 μ l per well for one-step Western blot using 1st Ab conjugated with reporter enzymes.
- Apply more for thicker (> 1.5 mm) or larger gel.

Description

YesBlot™ Western Marker I is a ready-to-use mixture with ten IgG-binding proteins covering a wide range of molecular weights from 15 to 200 kDa in Tris-Glycine buffer.

YesBlot™ Western Marker I performs dual functions. First, it contains 4 pre-stained proteins (10, 25, 45 and 70 kDa) for monitoring protein separation during SDS-PAGE, verification of Western transfer efficiency on membranes (nitrocellulose, PVDF, or nylon) and for approximating the protein size. Second, ten IgG-binding proteins can be immuno-detected on film or by CCD imaging.

YesBlot™ Western Marker I is compatible for chemiluminescent, fluorescent, chromogenic or other detection systems. In addition, YesBlot™ Western Marker I has two reference bands with enhanced intensity (at 30 kDa and 80 kDa).

The marker is supplied in the gel loading buffer and is ready to use. **Do NOT heat, dilute, or add reducing agents before loading.**

Contents

The YesBlot™ Western Marker I contains recombinant IgG binding proteins, Glycerol, SDS, and tracking dyes in a Tris-HCl buffer.

Features

- **4 prestained proteins** for clear visualization during electrophoresis and Western blotting transfer
- **10 IgG-binding proteins** for visualization on Western blots
- Wide range size estimation (**10-200 kDa**)
- Two enhanced bands (**30 and 80 kDa**)

Guide for Molecular Weight Estimation (kDa)

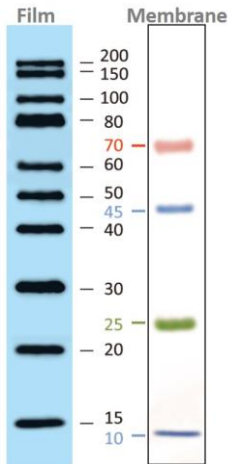
Migration patterns of prestained proteins of the YesBlot™ Western Marker I (10-200 kDa) in different electrophoresis conditions are listed below:

Band	Color	TRIS-GLYCINE	BIS-TRIS (MOPS)	BIS-TRIS (MES)
1	Pink	70	61	62
2	Blue	45	41	42
3	Green	25	22	23
4	Blue	10	9	10



SMOBio
Small Bio, Smart Tool

YesBlot™ Western Marker I



Note. The apparent molecular weight (kDa) of each prestained protein has been determined by calibration against an unstained protein standard; supplemental data should be considered for more accurate adjustments in different electrophoresis conditions.

Quality Control

Under suggested conditions, the YesBlot™ Western Marker I resolves 4 pre-stained bands on the membrane and 10 bands after secondary antibodies binding followed by chemiluminescent detection.

Caution! Not intended for human or animal diagnostic or therapeutic uses.

Related Products

- PM1500 ExcelBand All Blue Regular Range Protein Marker, 250 μ l \times 2
- PM1600 ExcelBand All Blue Regular Range Plus Protein Marker, 250 μ l \times 2
- PM1700 ExcelBand All Blue Broad Range Protein Marker, 250 μ l \times 2
- PM2400 ExcelBand Pink Blue Protein Marker, 250 μ l \times 2
- PM2500 ExcelBand 3-color Regular Range Protein Marker, 250 μ l \times 2
- PM2510 ExcelBand Enhanced 3-color Regular Range Protein Marker, 250 μ l \times 2
- PM2600 ExcelBand 3-color High Range Protein Marker, 250 μ l \times 2
- PM2610 ExcelBand Enhanced 3-color High Range Protein Marker, 250 μ l \times 2
- PM2700 ExcelBand 3-color Broad Range Protein Marker, 250 μ l \times 2
- PM2800 ExcelBand 3-color Extra Range Protein Marker, 250 μ l \times 2
- PM5000 ExcelBand 3-color Pre-stained Protein Ladder, Regular Range, 250 μ l \times 2
- PM5100 ExcelBand 3-color Pre-stained Protein Ladder, High Range, 250 μ l \times 2
- PM5200 ExcelBand 3-color Pre-stained Protein Ladder, Broad Range, 250 μ l \times 2

PS1000	FluoroStain Protein Fluorescent Staining Dye (Red, 1,000X), 1 ml
PS1001	FluoroStain Protein Fluorescent Staining Dye (Red, 1,000X), 1 ml x 5
DM1160	FluoroBand 50 bp Fluorescent DNA Ladder, 500 µl
DM2160	FluoroBand 100 bp Fluorescent DNA Ladder, 500 µl
DM2360	FluoroBand 100 bp+3K Fluorescent DNA Ladder, 500 µl
DM3160	FluoroBand 1 KB (0.25-10 kb) Fluorescent DNA Ladder, 500 µl
DM3260	FluoroBand 1 KB Plus (0.1-10 kb) Fluorescent DNA Ladder, 500 µl
DM4160	FluoroBand XL 25 kb Fluorescent DNA Ladder, Broad Range (up to 25 kb), 500 µl
DL5000	FluoroDye DNA Fluorescent Loading Dye (Green, 6X), 1 ml
DS1000	ExcelStain DNA Fluorescent Staining Dye (Green, 10,000X), 500 µl
DS1001	ExcelStain DNA Fluorescent Staining Dye (Green, 10,000X), 500 µl x 5
VE0100	B-BOX™ Blue Light LED epi-illuminator, AC 100-240V, 50/60Hz