



SMOBio

Small Bio, Smart Tool

www.smobio.com

Product Information

ExcelBand™ series

Enhanced 3-color High Range Protein Marker (9-245 kDa)

PM2610

Size: 250 μ l \times 2 (for 100 applications)

PM2611

Size: 250 μ l \times 10 (for 500 applications)

Storage

4°C \geq 3 months

-20°C \geq 24 months

Loading Volume

- 3 μ l or 5 μ l per loading for clear visualization during electrophoresis on 15-well or 10-well mini-gel.
- 1.5~2.5 μ l per well for general Western blotting transfer.
- Apply more for thicker (> 1.5 mm) or larger gel.

Description

The PM2610/PM2611 ExcelBand™ Enhanced 3-color High Range Protein Marker is a ready to use three-color protein standard with 12 pre-stained proteins covering a wide range of molecular weights from 10 to 245 kDa in Tris-Glycine buffer (9 to 235 kDa in Bis-Tris (MOPS) buffer and 10-235 kDa in Bis-Tris (MES) buffer). Proteins are covalently coupled with different chromophores for easy identification of bands, with two reference proteins carrying enhanced intensity corresponding to a **green** at 25 kDa and **red** at 75 kDa, respectively, as separated on SDS-PAGE (Tris-Glycine buffer).

The ExcelBand™ Enhanced 3-color High Range Protein Marker is designed for monitoring protein separation during SDS-polyacrylamide gel electrophoresis, verification of Western transfer efficiency on membranes (PVDF, nylon, or nitrocellulose) and for approximating the size of proteins.

The marker is supplied in the gel loading buffer and is ready to use. **Do NOT heat, dilute, or add reducing agents before loading.**

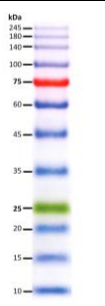
Contents

Approximately 0.2~0.6 mg/ml of each protein in the buffer (20 mM Tris-phosphate (pH 7.5 at 25°C), 2 % SDS, 3.6 M Urea, and 15 % (v/v) Glycerol).

Guide for Molecular Weight Estimation (kDa)

Migration patterns of the PM2610/PM2611 Enhanced 3-color High Range Protein Marker in different electrophoresis conditions are listed below:

Band	Color	TRIS-GLYCINE	BIS-TRIS (MOPS)	BIS-TRIS (MES)
1	Blue	245	235	235
2	Blue	180	170	170
3	Blue	140	130	130
4	Blue	100	93	93
5	Red	75	70	72
6	Blue	60	53	53
7	Blue	45	41	42
8	Blue	35	30	30
9	Green	25	22	23
10	Blue	20	18	18
11	Blue	15	14	14
12	Blue	10	9	10



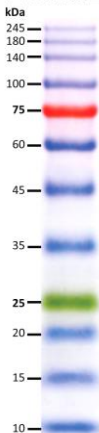


SMOBio
Small Bio, Smart Tool

ExcelBand™

Enhanced 3-color High Range Protein Marker

PM2610



Note. The apparent molecular weight (kDa) of each protein has been determined by calibration against an unstained protein standard; supplemental data should be considered for more accurate adjustments in different electrophoresis conditions.

Quality Control

Under suggested conditions, the PM2610/PM2611 Enhanced 3-color High Range Protein Marker resolves 12 major bands in 15% SDS-PAGE (Tris-Glycine buffer) and after Western blotting to nitrocellulose membrane.

Caution! Not intended for human or animal diagnostic or therapeutic uses.

Related Products

- PM1500 ExcelBand All Blue Regular Range Protein Marker, 250 μ l \times 2
- PM1600 ExcelBand All Blue Regular Range Plus Protein Marker, 250 μ l \times 2
- PM1700 ExcelBand All Blue Broad Range Protein Marker, 250 μ l \times 2
- PM2400 ExcelBand Pink Blue Protein Marker, 250 μ l \times 2
- PM2500 ExcelBand 3-color Regular Range Protein Marker, 250 μ l \times 2
- PM2510 ExcelBand Enhanced 3-color Regular Range Protein Marker, 250 μ l \times 2
- PM2600 ExcelBand 3-color High Range Protein Marker, 250 μ l \times 2
- PM2700 ExcelBand 3-color Broad Range Protein Marker, 250 μ l \times 2
- PM2800 ExcelBand 3-color Extra Range Protein Marker, 250 μ l \times 2
- PM5000 ExcelBand 3-color Pre-stained Protein Ladder, Regular Range, 250 μ l \times 2
- PM5100 ExcelBand 3-color Pre-stained Protein Ladder, High Range, 250 μ l \times 2
- PM5200 ExcelBand 3-color Pre-stained Protein Ladder, Broad Range, 250 μ l \times 2
- PS1000 FluoroStain Protein Fluorescent Staining Dye (Red, 1,000X), 1 ml

PS1001	FluoroStain Protein Fluorescent Staining Dye (Red, 1,000X), 1 ml x 5
DM1160	FluoroBand 50 bp Fluorescent DNA Ladder, 500 μ l
DM2160	FluoroBand 100 bp Fluorescent DNA Ladder, 500 μ l
DM2360	FluoroBand 100 bp+3K Fluorescent DNA Ladder, 500 μ l
DM3160	FluoroBand 1 KB (0.25-10 kb) Fluorescent DNA Ladder, 500 μ l
DM3260	FluoroBand 1 KB Plus (0.1-10 kb) Fluorescent DNA Ladder, 500 μ l
DM4160	FluoroBand XL 25 kb Fluorescent DNA Ladder, Broad Range (up to 25 kb), 500 μ l
DL5000	FluoroDye DNA Fluorescent Loading Dye (Green, 6X), 1 ml
DS1000	ExcelStain DNA Fluorescent Staining Dye (Green, 10,000X), 500 μ l
DS1001	ExcelStain DNA Fluorescent Staining Dye (Green, 10,000X), 500 μ l x 5
VE0100	B-BOX™ Blue Light LED epi-illuminator, AC 100-240V, 50/60Hz