



SMOBio

Small Bio, Smart Tool

www.smobio.com

Product Information

ExcelBand Enhanced 3-color Regular Range Protein Marker (9-180 kDa)

PM2510

Size: 250 μ l \times 2
5 μ l per well for 100 applications

Storage

4°C \geq 3 months

-20°C \geq 24 months

Loading Volume

- 3 μ l or 5 μ l per loading for clear visualization during electrophoresis on 15-well or 10-well mini-gel.
- 1.5~2.5 μ l per well for general Western transferring.
- Apply more for thicker ($>$ 1.5 mm) or larger gel.

Description

PM2510 ExcelBand Enhanced 3-color Regular Range Protein Marker is a ready to use three-color protein standard with 10 pre-stained proteins covering a wide range of molecular weights from 10 to 180 kDa (9 to 170 kDa in Bis-Tris (MOPS) buffer and 10 to 170 kDa in Bis-Tris (MES) buffer). Proteins are covalently coupled with a blue chromophore except for two reference **green** and **red** bands (25 kDa and 75 kDa, respectively) when separated on SDS-PAGE (Tris-Glycine buffer).

PM2510 ExcelBand Enhanced 3-color Regular Range Protein Marker is designed for monitoring protein separation during SDS-polyacrylamide gel electrophoresis, verification of Western transfer efficiency on membranes (PVDF, nylon, or nitrocellulose) and for approximating the protein size.

The marker is supplied in the gel loading buffer and is ready to use. **Do NOT heat, dilute, or add reducing agents before loading.**

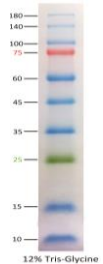
Contents

Approximately 0.2~0.6 mg/ml of each protein in the buffer (20 mM Tris-phosphate, pH 7.5, 2% SDS, 3.6 M Urea, and 15% (v/v) Glycerol).

Guide for Molecular Weight Estimation (kDa)

Migration patterns of the PM2510 ExcelBand Enhanced 3-color Regular Range Protein Marker in different electrophoresis conditions are listed below:

Band	Color	TRIS-GLYCIN	BIS-TRIS (MOPS)	BIS-TRIS (MES)
1	Blue	180	170	170
2	Blue	140	130	130
3	Blue	100	93	93
4	Red	75	70	72
5	Blue	60	53	53
6	Blue	45	41	42
7	Blue	35	30	30
8	Green	25	22	23
9	Blue	15	14	14
10	Blue	10	9	10



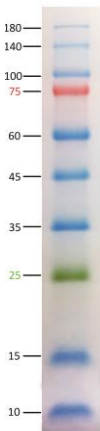
12% Tris-Glycine



SMOBio
Small Bio, Smart Tool

ExcelBand Enhanced 3-color Regular Range Protein Marker

PM2510



12% Tris-Glycine



Note. The apparent molecular weight (kDa) of each protein has been determined by calibration against an unstained protein standard; supplemental data should be considered for more accurate adjustments in different electrophoresis conditions.

Quality Control

Under suggested conditions, ExcelBand Enhanced 3-color Regular Range Protein Marker resolves all 10 major bands on a 15% SDS-PAGE. All bands should be visible after being transferred to a nitrocellulose membrane.

Caution! Not intended for human or animal diagnostic or therapeutic uses.

Related Products

- PM1500 ExcelBand All Blue Regular Range Protein Marker, 250 μ l \times 2
- PM1600 ExcelBand All Blue Regular Range Plus Protein Marker, 250 μ l \times 2
- PM1700 ExcelBand All Blue Broad Range Protein Marker, 250 μ l \times 2
- PM2400 ExcelBand Pink Blue Protein Marker, 250 μ l \times 2
- PM2500 ExcelBand 3-color Regular Range Protein Marker, 250 μ l \times 2
- PM2600 ExcelBand 3-color High Range Protein Marker, 250 μ l \times 2
- PM2700 ExcelBand 3-color Broad Range Protein Marker, 250 μ l \times 2
- PM5000 ExcelBand 3-color Pre-stained Protein Ladder, Regular Range, 250 μ l \times 2
- PM5100 ExcelBand 3-color Pre-stained Protein Ladder, High Range, 250 μ l \times 2
- PM5200 ExcelBand 3-color Pre-stained Protein Ladder, Broad Range, 250 μ l \times 2
- PS1000 FluoroStain Protein Fluorescent Staining Dye (Red, 1,000X), 1 ml
- PS1001 FluoroStain Protein Fluorescent Staining Dye (Red, 1,000X), 1 ml \times 5
- DM1160 FluoroBand 50 bp Fluorescen DNA Ladder, 500 μ l

- DM2160 FluoroBand 100 bp Fluorescent DNA Ladder, 500 μ l
- DM2360 FluoroBand 100 bp+3K Fluorescent DNA Ladder, 500 μ l
- DM3160 FluoroBand 1 KB (0.25-10 kb) Fluorescent DNA Ladder, 500 μ l
- DM3260 FluoroBand 1 KB Plus (0.1-10 kb) Fluorescent DNA Ladder, 500 μ l
- DM4160 FluoroBand XL 25 kb Fluorescent DNA Ladder, Broad Range (up to 25 kb), 500 μ l
- DL5000 FluoroDye DNA Fluorescent Loading Dye (Green, 6X), 1ml
- DS1000 ExcelStain DNA Fluorescent Staining Dye (Green, 10,000X), 500 μ l
- DS1001 ExcelStain DNA Fluorescent Staining Dye (Green, 10,000X), 500 μ l x 5
- VE0100 B-BOX™ Blue Light LED epi-illuminator, AC 100-240V, 50/60Hz