



SMOBio

Small Bio, Smart Tool

www.smobio.com

Product Information

ExcelBand™ series

**Pink Blue Protein Marker,
(7-175 kDa)**

PM2400

Size: 250 μ l \times 2
5 μ l per well for 100 applications

Storage

4°C for 3 months
-20°C for 24 months

Loading Volume

- **3 μ l** or **5 μ l** per loading for clear visualization during electrophoresis on a 15-well or 10-well mini-gel.
- **1.5~2.5 μ l** per well for general Western blotting transfer.
- Apply more for a thicker (> 1.5 mm) or larger gel.

Description

The PM2400 ExcelBand™ Pink Blue Protein Marker is a two-color protein standard with 11 pre-stained proteins covering a wide range of molecular weights from 10 to 175 kDa in Tris-Glycine buffer (10 to 165 kDa in Bis-Tris (MOPS) buffer and 7 to 165 kDa in Bis-Tris (MES) buffer). Proteins are covalently coupled with a pink chromophore except for three reference bands of blue color (at 10, 40, and 90 kDa, respectively) when separated on SDS-PAGE (Tris-Glycine buffer).

The PM2400 ExcelBand™ Pink Blue Protein Marker is designed for monitoring protein separation during SDS-polyacrylamide gel electrophoresis, verification of Western transfer efficiency on membranes (nitrocellulose, PVDF, or nylon) and for approximating the size of proteins.

The marker is supplied in gel loading buffer and is ready to use. **Do NOT heat, dilute, or add reducing agents before loading.**

Contents

Approximately 0.2~0.4 mg/ml of each protein in the buffer (20 mM Tris-phosphate, pH 7.5 at 25°C), 2% SDS, 1 mM Dithiothreitol, 4.8 M urea, and 12% (v/v) Glycerol).

Guide for Molecular Weight Estimation

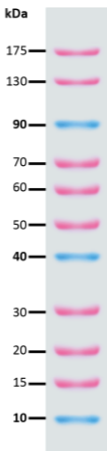
Migration patterns and approximate MWs (kDa) of PM2400 ExcelBand™ Pink Blue Protein Marker in different electrophoresis conditions are listed below:

Band	Color	TRIS- GLYCINE	BIS-TRIS (MOPS)	BIS-TRIS (MES)	
1	Ruby	175	165	165	
2	Ruby	130	120	125	
3	Blue	90	80	82	
4	Ruby	70	61	62	
5	Ruby	60	52	55	
6	Ruby	50	42	45	
7	Blue	40	32	34	
8	Ruby	30	24	26	
9	Ruby	20	17	16	
10	Ruby	15	13	12	
11	Blue	10	10	7	



SMOBio
Small Bio, Smart Tool

ExcelBand™
Pink Blue Protein Marker
PM2400



Note. The apparent molecular weight (kDa) of each protein has been determined by calibration against an unstained protein standard; supplemental data should be considered for more accurate adjustments in different electrophoresis conditions.

Quality Control

Under suggested conditions, PM2400 ExcelBand™ Pink Blue Protein Marker resolves 11 major bands in SDS-PAGE (Tris-Glycine, MOPS, and MES buffer) and after Western blotting transfer to a nitrocellulose membrane.

Other information

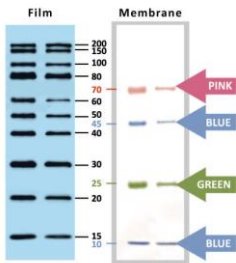
SMOBIO Technology, Inc. claims all warranties with respect to this document, expressed or implied, including but not limited to those of merchantability or fitness for a particular purpose. In no event shall SMOBIO Technology, Inc. be liable, whether in contract, tort, warranty, or under any statute or any other basis for special, incidental, indirect, punitive, multiple or consequential damages in connection with or arising from this document, including but not limited to the use thereof.

Caution: Not intended for human or animal diagnostic or therapeutic uses.

Related Products

- PM1500 ExcelBand All Blue Regular Range Protein Marker, 250 μ l \times 2
- PM1600 ExcelBand All Blue Regular Range Plus Protein Marker, 250 μ l \times 2
- PM1700 ExcelBand All Blue Broad Range Protein Marker, 250 μ l \times 2
- PM2500 ExcelBand 3-color Regular Range Protein Marker, 250 μ l \times 2
- PM2510 ExcelBand Enhanced 3-color Regular Range Protein Marker, 250 μ l \times 2
- PM2600 ExcelBand 3-color High Range Protein Marker, 250 μ l \times 2
- PM2610 ExcelBand Enhanced 3-color High Range Protein Marker, 250 μ l \times 2
- PM2700 ExcelBand 3-color Broad Range Protein Marker, 250 μ l \times 2
- PM2800 ExcelBand 3-color Extra Range Protein Marker, 250 μ l \times 2
- PM5000 ExcelBand 3-color Pre-stained Protein Ladder, Regular Range, 250 μ l \times 2
- PM5100 ExcelBand 3-color Pre-stained Protein Ladder, High Range, 250 μ l \times 2
- PM5200 ExcelBand 3-color Pre-stained Protein Ladder, Broad Range, 250 μ l \times 2

- PS1000 FluoroStain Protein Fluorescent Staining Dye (Red, 1,000X), 1 ml
- DM1100 ExcelBand 50 bp DNA Ladder, 500 μ l
- DM2200 AccuBand 100 bp DNA Ladder II, 500 μ l
- DM3100 ExcelBand 1 KB (0.25-10 kb) DNA Ladder, 500 μ l
- DM5100 ExcelBand Super Range DNA Ladder, (50 bp- 25 kb), 500 μ l
- VE0100 B-BOX™ Blue Light LED epi-illuminator, AC 100-240V, 50/60Hz
- WM1000 YesBlot Western Marker I, 250 μ l



YesBlot™ Western Marker I