



**SMOBIO**

Small Bio, Smart Tool

[www.smobio.com](http://www.smobio.com)

## Product Information

### ExcelBand All Blue Broad Range Protein Marker

#### PM1700

Size: 250  $\mu\text{l}$   $\times$  2  
5  $\mu\text{l}$  per well for 100 applications

## Storage

4°C  $\geq$  3 months  
-20°C  $\geq$  24 months

## Loading Volume

- 3  $\mu\text{l}$  or 5  $\mu\text{l}$  per loading for clear visualization during electrophoresis on 15-well or 10-well mini-gel, respectively.
- 1.5~2.5  $\mu\text{l}$  per well for general Western transferring.
- Apply more for thicker (> 1.5 mm) or larger gel.

## Description

The PM1700 ExcelBand All Blue Broad Range Protein Marker is a blue protein standard with 12 pre-stained proteins covering a wide range of molecular weights from 10 to 240 kDa in Tris-Glycine buffer (9 to 235 kDa in Bis-Tris (MOPS) buffer and Bis-Tris (MES) buffer). Proteins are covalently coupled with a blue chromophore, and two reference bands (at 25 kDa and 72 kDa, respectively) are enhanced in intensity when separated on SDS-PAGE (Tris-glycine buffer).

The PM1700 ExcelBand All Blue Broad Range Protein Marker is designed for monitoring protein separation during SDS-polyacrylamide gel electrophoresis, verification of Western transfer efficiency on membranes (PVDF, nylon, or nitrocellulose) and for approximating the size of proteins.


The marker is supplied in gel loading buffer and is ready to use. **Do NOT heat, dilute, or add reducing agent before loading.**

## Contents

Approximately 0.1~0.5 mg/ml of each protein in the buffer (20 mM Tris-phosphate, pH 7.5, 2% SDS, 0.2 mM Dithiothreitol, 3.6 M Urea, and 15% (v/v) Glycerol).

## Guide for Molecular Weight Estimation (kDa)

Migration patterns of All Blue Broad Range Protein Marker in different electrophoresis conditions are listed below:

Color	TRIS-GLYCINE	BIS-TRIS (MOPS)	BIS-TRIS (MES)	
Blue	240	235	235	
Blue	180	170	170	
Blue	140	130	130	
Blue	100	93	93	
Blue	<b>72</b>	<b>68</b>	<b>70</b>	
Blue	60	53	53	
Blue	45	41	42	
Blue	35	30	30	
Blue	<b>25</b>	<b>22</b>	<b>23</b>	
Blue	20	18	18	
Blue	15	14	14	
Blue	10	9	9	

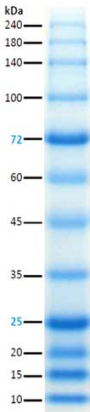
4-12% BIS-TRIS gel MES buffer



**SMOBio**  
Small Bio, Smart Tool

## ExcelBand All Blue Broad Range Protein Marker

PM1700



6-20% Tris-Glycine



**Note.** The apparent molecular weight (kDa) of each protein has been determined by calibration against an unstained protein standard; supplemental data should be considered for more accurate adjustment in different electrophoresis conditions.



## **Quality Control**

Under suggested conditions, PM1700 All Blue Broad Range Protein Marker resolves 12 major bands in 15% or 4-20% Tris-Glycine Gel with Tris-Glycine buffer and after Western blotting to nitrocellulose membrane.

**Caution!** Not intended for human or animal diagnostic or therapeutic uses.

## Related Products

- PM1500 ExcelBand All Blue Regular Range Protein Marker, 250  $\mu$ l  $\times$  2
- PM1600 ExcelBand All Blue Regular Range Plus Protein Marker, 250  $\mu$ l  $\times$  2
- PM2400 ExcelBand Pink Blue Protein Marker, 250  $\mu$ l  $\times$  2
- PM2500 ExcelBand 3-color Regular Range Protein Marker, 250  $\mu$ l  $\times$  2
- PM2600 ExcelBand 3-color High Range Protein Marker, 250  $\mu$ l  $\times$  2
- PM2700 ExcelBand 3-color Broad Range Protein Marker, 250  $\mu$ l  $\times$  2
- PM5000 ExcelBand 3-color Pre-stained Protein Ladder, Regular Range, 250  $\mu$ l  $\times$  2
- PM5100 ExcelBand 3-color Pre-stained Protein Ladder, High Range, 250  $\mu$ l  $\times$  2
- PM5200 ExcelBand 3-color Pre-stained Protein Ladder, Broad Range, 250  $\mu$ l  $\times$  2
- PS1000 FluoroStain Protein Fluorescent Staining Dye (Red, 1,000X), 1 ml
- PS1001 FluoroStain Protein Fluorescent Staining Dye (Red, 1,000X), 1 ml  $\times$  5
- DM1160 FluoroBand 50 bp Fluorescen DNA Ladder, 500  $\mu$ l
- DM2160 FluoroBand 100 bp Fluorescent DNA Ladder, 500  $\mu$ l

- DM2360 FluoroBand 100 bp+3K Fluorescent DNA Ladder, 500  $\mu$ l
- DM3160 FluoroBand 1 KB (0.25-10 kb) Fluorescent DNA Ladder, 500  $\mu$ l
- DM3260 FluoroBand 1 KB Plus (0.1-10 kb) Fluorescent DNA Ladder, 500  $\mu$ l
- DM4160 FluoroBand XL 25 kb Fluorescent DNA Ladder, Broad Range (up to 25 kb), 500  $\mu$ l
- DL5000 FluoroDye DNA Fluorescent Loading Dye (Green, 6X), 1ml
- DS1000 ExcelStain DNA Fluorescent Staining Dye (Green, 10,000X), 500  $\mu$ l
- DS1001 ExcelStain DNA Fluorescent Staining Dye (Green, 10,000X), 500  $\mu$ l x 5
- VE0100 B-BOX™ Blue Light LED epi-illuminator, AC 100-240V, 50/60Hz