



SMOBio

Small Bio, Smart Tool

www.smobio.com

Product Information

FluoroBand 1 KB Plus (0.1-10 kb) Fluorescent DNA Ladder, Ready to Use

DM3260 **86 μ g / 500 μ l**

Size: 500 μ l

5 μ l per well for 100 gel applications

Storage

Protected from light

Room temperature \geq 6 months

4°C \geq 12 months

-20°C \geq 24 months

Description

The DM3260 FluoroBand 1 KB Plus (0.1-10 kb) Fluorescent DNA Ladder is a ready-to-use DNA ladder, which is pre-mixed with high sensitivity DNA binding fluorescent dye and loading buffer for direct loading on gel. The DM3260 DNA ladder is composed of 19 individual DNA fragments: 10k, 8k, 6k, 5k, 4k, **3k**, 2.5k, 2k, **1.5k**, 1k, 900, 800, 700, 600, **500**, 400, 300, 200 and 100 base pairs derived from a mixture of PCR products and specifically digested plasmid DNA; these bands can be visualized when illuminated with 470 nm blue light or UV light. This product contains three enhanced bands (3 kb, 1.5 kb and 500 bp) for easy reference. In addition, three tracking dyes, Xylene cyanol FF, Bromophenol blue and Orange G which mimic the migration of 4000 bp, 500 bp and 50 bp dsDNA during electrophoresis are also added for real time monitoring. Real time observation of the electrophoresis is also possible if compatible light source is fitted to the electrophoresis tank.

Buffering

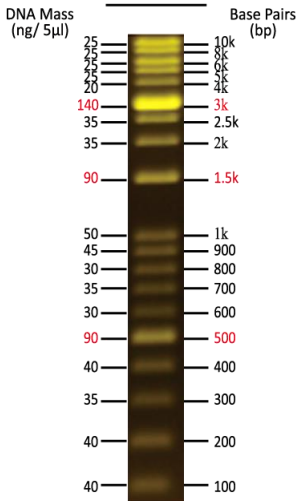
10 mM Tris-HCl (pH 8.0), 10 mM Na-EDTA, 0.025% Orange G, 0.005% Bromophenol blue 0.005%, Xylene cyanol FF and 10% Glycerol.

Quality Control

1. 19 defined bands are formed during the electrophoresis on the agarose gel.
2. No nuclease activity is observed by a direct nuclease activity assay.

The ladder is supplied in gel loading buffer and is ready to use. Do not heat or dilute before loading.

DM3260



1% Agarose Gel
0.5x TAE Buffer

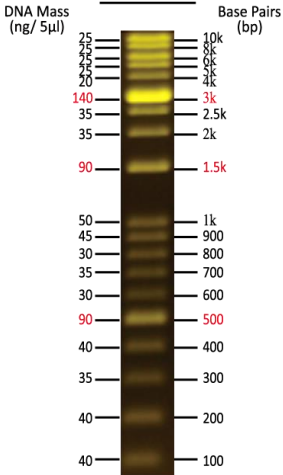
Note: This DNA Ladder was not designed for precise quantification of DNA mass, but can be used for approximating the mass of DNA by intensity comparison.



SMOBIO
Small Bio, Smart Tool

FluoroBand 1 kb Plus (0.1-10 kb) Fluorescent DNA Ladder

DM3260



1% Agarose Gel
0.5x TAE Buffer



Other information

SMOBiO, Inc. claims all warranties with respect to this document, expressed or implied, including but not limited to those of merchantability or fitness for a particular purpose. In no event shall SMOBiO, Inc. be liable, whether in contract, tort, warranty, or under any statute or any other basis for special, incidental, indirect, punitive, multiple or consequential damages in connection with or arising from this document, including but not limited to the use thereof.

Caution: Not intended for human or animal diagnostic or therapeutic uses.

Related Products

- DM1100 ExcelBand 50 bp DNA Ladder, 500 μ l
- DM1160 FluoroBand 50 bp Fluorescent DNA Ladder, 500 μ l
- DM2100 ExcelBand 100 bp DNA Ladder, 500 μ l
- DM2160 FluoroBand 100 bp Fluorescent DNA Ladder, 500 μ l
- DM2300 ExcelBand 100 bp+3K DNA Ladder, 500 μ l
- DM2360 FluoroBand 100 bp+3K DNA Fluorescent DNA Ladder, 500 μ l
- DM3100 ExcelBand 1 KB (0.25-10 kb) DNA Ladder, 500 μ l
- DM3160 FluoroBand 1 KB (0.25-10 kb) Fluorescent DNA Ladder, 500 μ l
- DM3200 ExcelBand 1 KB Plus (0.1-10 kb) DNA Ladder, 500 μ l
- DM4100 ExcelBand XL 25 kb DNA Ladder, Broad Range (up to 25 kb), 500 μ l
- DM4160 FluoroBand XL 25 kb Fluorescent DNA Ladder, Broad Range (up to 25 kb), 500 μ l
- DL5000 FluoroDye DNA Fluorescent Loading Dye (Green, 6X), 1ml
- DS1000 FluoroStain DNA Fluorescent Staining Dye (Green, 10,000X), 500 μ l
- VE0100 B-BOXTM Blue Light LED epi-illuminator



B-BOX™ Blue Light LED epi-illuminator

For research use only
2013 ver. 1.2.0