



**SMOBIO**

Small Bio, Smart Tool

[www.smobio.com](http://www.smobio.com)

## Product Information

### ExcelDye 6X DNA Loading Dye

**DL4000      5 ml × 2 (Tri-color, 6X)**

## Storage

4°C      ≥ 12 months

-20°C    ≥ 36 months

## Working Reagent Preparation

1:6 dilution in DNA electrophoresis sample.

(1μl loading dye for every 5 μl DNA sample)

## Description

SMOBiO ExcelDye 6X DNA Loading dye (Tri-Color) is pre-mixed buffer for tracking the DNA sample during the electrophoresis on agarose or polyacrylamide gels. It contains three dyes (Xylene cyanol FF, Bromophenol blue and Orange G) for tracking the DNA migration. The Xylene cyanol FF, Bromophenol blue and Orange G migrate at approximately 800 bp, 150 bp and 30 bp on a standard 2% TAE agarose gel respectively (4,000, 500 bp and 50 bp on 1% TAE agarose gel respectively). The included glycerol can keep the DNA at the bottom of the well and the presence of EDTA chelates divalent metal ions to prevent the process of metal-dependent nuclease.

## Composition

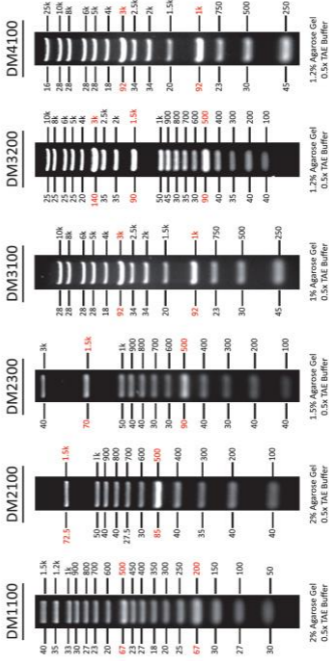
0.03% Xylene cyanol FF  
0.03% Bromophenol blue  
0.15% Orange G  
10 mM Tris-HCl (pH 8.0)  
60% glycerol  
60 mM EDTA





## ExcelBand DNA Ladders

DNA Mass (ng/ 5µl) / Base Pairs (bp)





## FluoroBand DNA Ladders

