



**SMOBIO**

Small Bio, Smart Tool

[www.smobio.com](http://www.smobio.com)

## Product Information

**ExcelDye™ 6X DNA Loading Dye, Blue**

**DL3000      5 ml × 2 (Blue, 6X)**

## Storage

4°C for 12 months

-20°C for 36 months

## Working Reagent Preparation

1:6 dilution per DNA electrophoresis sample.

(1 µl loading dye for every 5 µl DNA sample)

## Description

SMOBIO's ExcelDye™ 6X DNA Loading dye is a blue pre-mixed buffer for tracking DNA samples during electrophoresis on agarose or polyacrylamide gels. It contains two dyes (Xylene cyanol FF and Bromophenol blue) for tracking the DNA migration. The Xylene cyanol FF and Bromophenol blue migrate at approximately 800 bp and 150 bp on a standard 2% TAE agarose gel (4,000 and 500 bp on 1% TAE agarose gel). The included glycerol helps keep DNA at the bottom of the well and the presence of EDTA chelates any divalent metal ions to prevent the process of a metal-dependent nuclease.

## Composition

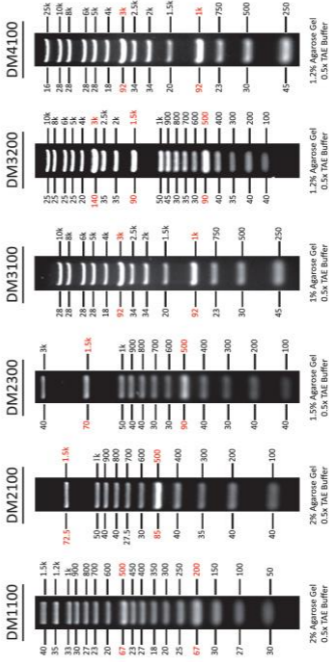
0.03% Xylene cyanol FF  
0.03% Bromophenol blue  
10 mM Tris-HCl (pH 8.0)  
60% glycerol  
60 mM EDTA





## ExcelBand DNA Ladders

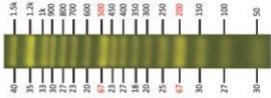
DNA Mass (ng/ 5 $\mu$ l) / Base Pairs (bp)





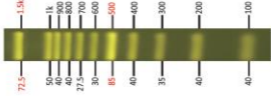
## FluoroBand DNA Ladders

DM1160



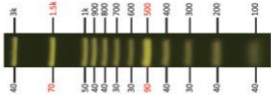
2% Agarose Gel  
0.5x TAE Buffer

DM2160



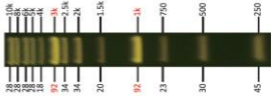
2% Agarose Gel  
0.5x TAE Buffer

DM2360



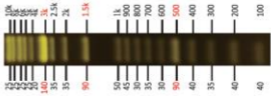
1.5% Agarose Gel  
0.5x TAE Buffer

DM3160



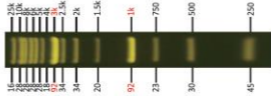
1% Agarose Gel  
0.5x TAE Buffer

DM3260



1% Agarose Gel  
0.5x TAE Buffer

DM4160



1% Agarose Gel  
0.5x TAE Buffer